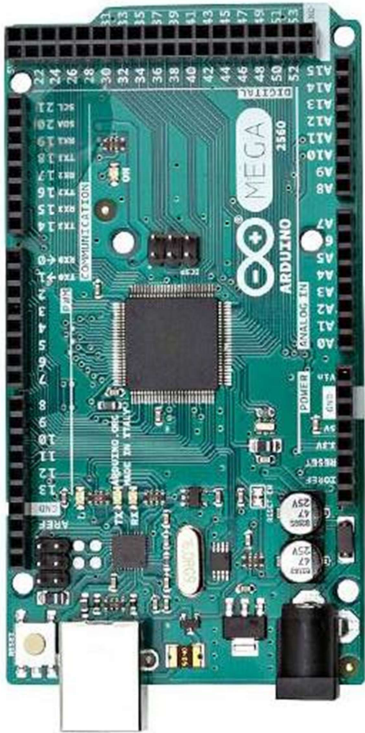


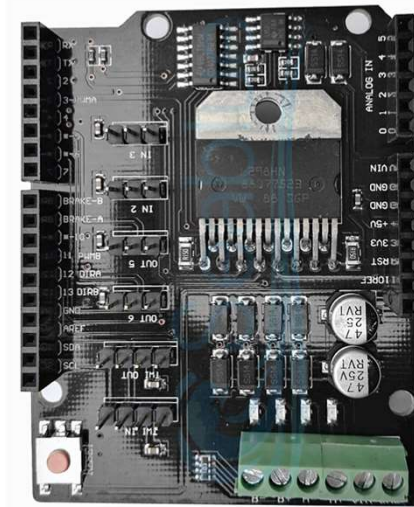
DCC++ EX centrale met Arduino Mega en motor shield L298NH

(Ed den Ouden, 2021)

Arduino Mega

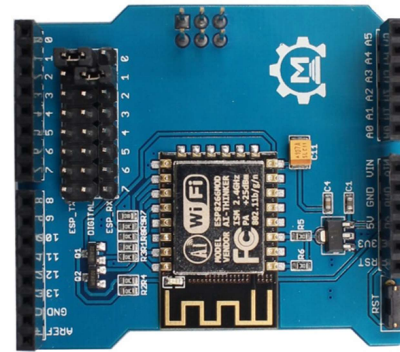


L298NH motor shield

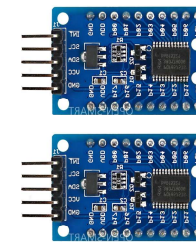


DCC

WiFi ESP-8266 (optie)

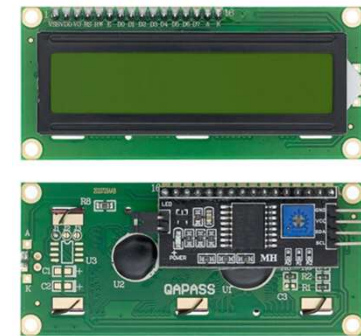


IO expanders I2C (optie)



Terugmelding, wissels, etc

I2C 1602 display (optie)



Bouwinstructie staat op dcc-ex.com